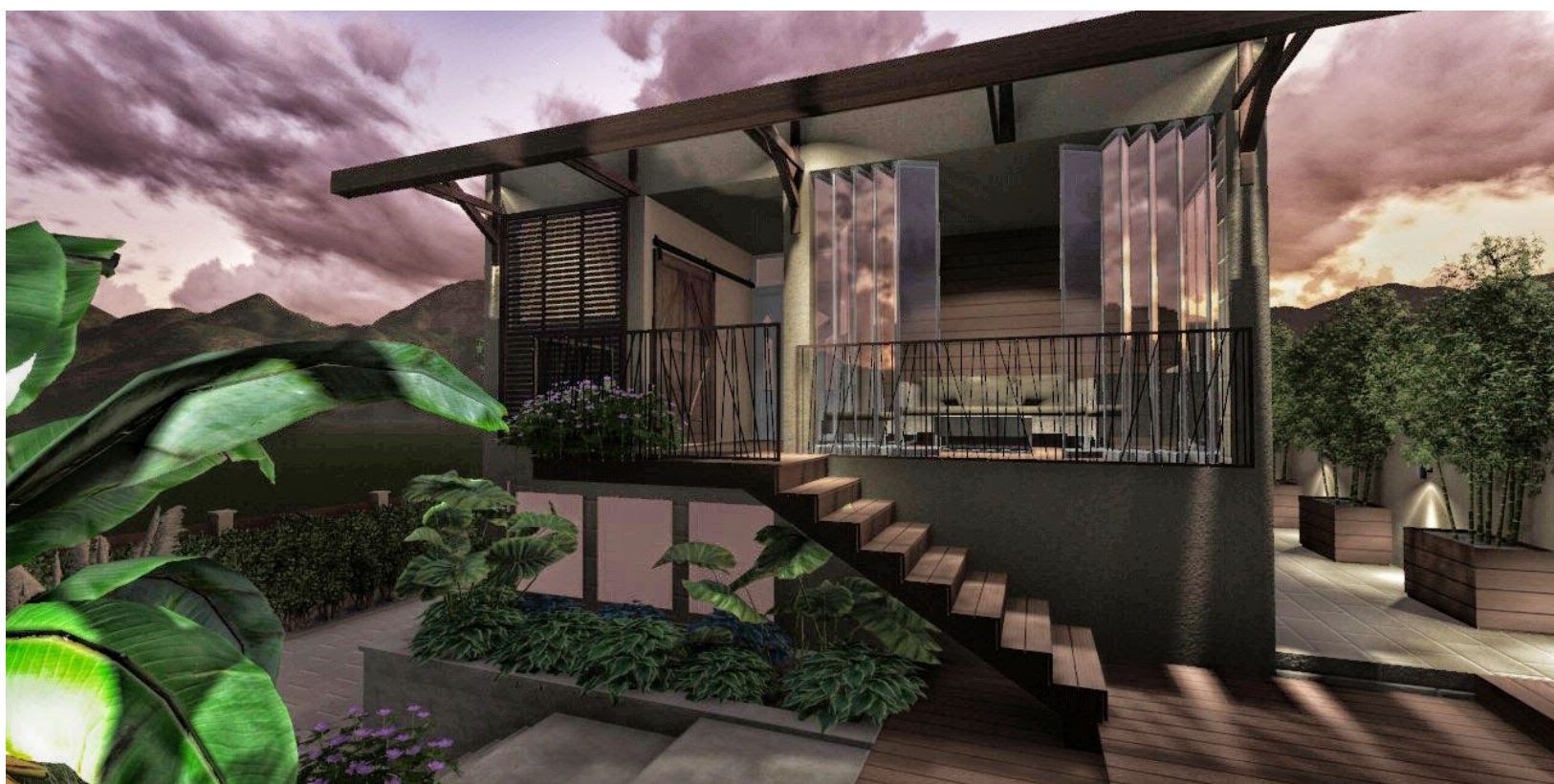




Porodična kuća u Arandjelovcu 2020

Osvrt na projekat



Pejzažni dizajn & Planiranje | Landscaping & Planning



Perspektivni prikaz vrta

Idejno rešenje eksterijera, terase, ograde i dekorativne rasvete. Conceptual design of the garden, main terrace, fence and lighting.

Izuzetno prostran i dobro pozicioniran plac sa porodičnom kućom od oko 120 kvm u širem centru Arandjelovca dao je odmah od prvog susreta pregršt idejnih mogućnosti, Klijenti su imali želju za prostranim i jednostavnim vrtom gde je akcenat stavljen na prirodne materijale gaznih površina, veće travnate masive i kvalitetnu ogradu od kovanog gvoždja. Cvetne leje i niži dendro materijal su kod ove porodice bili u drugom planu. Uradjeno je idejno rešenje glavne terase koja je zastakljena finskim staklom za potrebe uživanja i u zimskim mesecima.

“

Najlepši vrt je tamo gde je porodica

”

Osmišljena je i komplet nova ograda sa kombinacijom lepljenog kamena i dekinga, kao i kamena i kovanog gvoždja. Projektovan je i manji bazen iza kuće sa deking palubama kao i boks za pse. Takodje u južnom delu placu, ostavljena je i mogućnost za prenamenu dela površine u poluzatvoreni prostor. Kompletan projekat eksterijera, terase, ograde i rasvete uspešno je priveden kraju na zadovoljstvo ove porodice.





Family house in Arandjelovac, Serbia (2020)

Conceptual design of the garden, main terrace, fence and lighting.

Extremely spacious and well-positioned plot with a family house (120 sq) in the wider center of Arandjelovac gave a handful of conceptual options right from the first meeting. Classical lower lines and lower green materials were not in the focus of this family. The conceptual design of the main terrace, which is glazed with Finnish glass for the needs of enjoyment in the winter months, has been made. A set of new fences was designed with a combination of nature stone and decking, as well as nature stone and wrought iron. A smaller pool behind the house with decking surfaces was also designed, as well as a small dog house. Also in the southern part of the plot, we left a possibility to convert part of the area into a semi-enclosed space. The complete project of the exterior, terrace, fence and lighting has been successfully completed with the full satisfaction of this gorges family.



Živi.Voli.Kreiraj.Zeleni.Studio. Beograd, Srbija
